

Villa D2

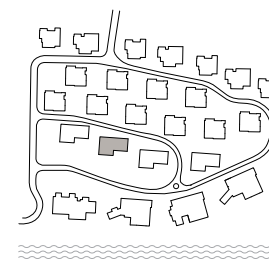
SUMMARY

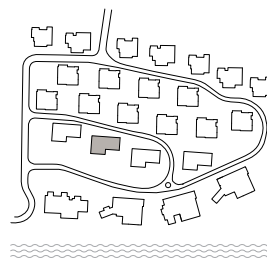
Bedrooms	6
Covered parking	2
Garage	2

TOTAL INDOOR: 346,8 m²

TOTAL OUTDOOR: 268,7 m²

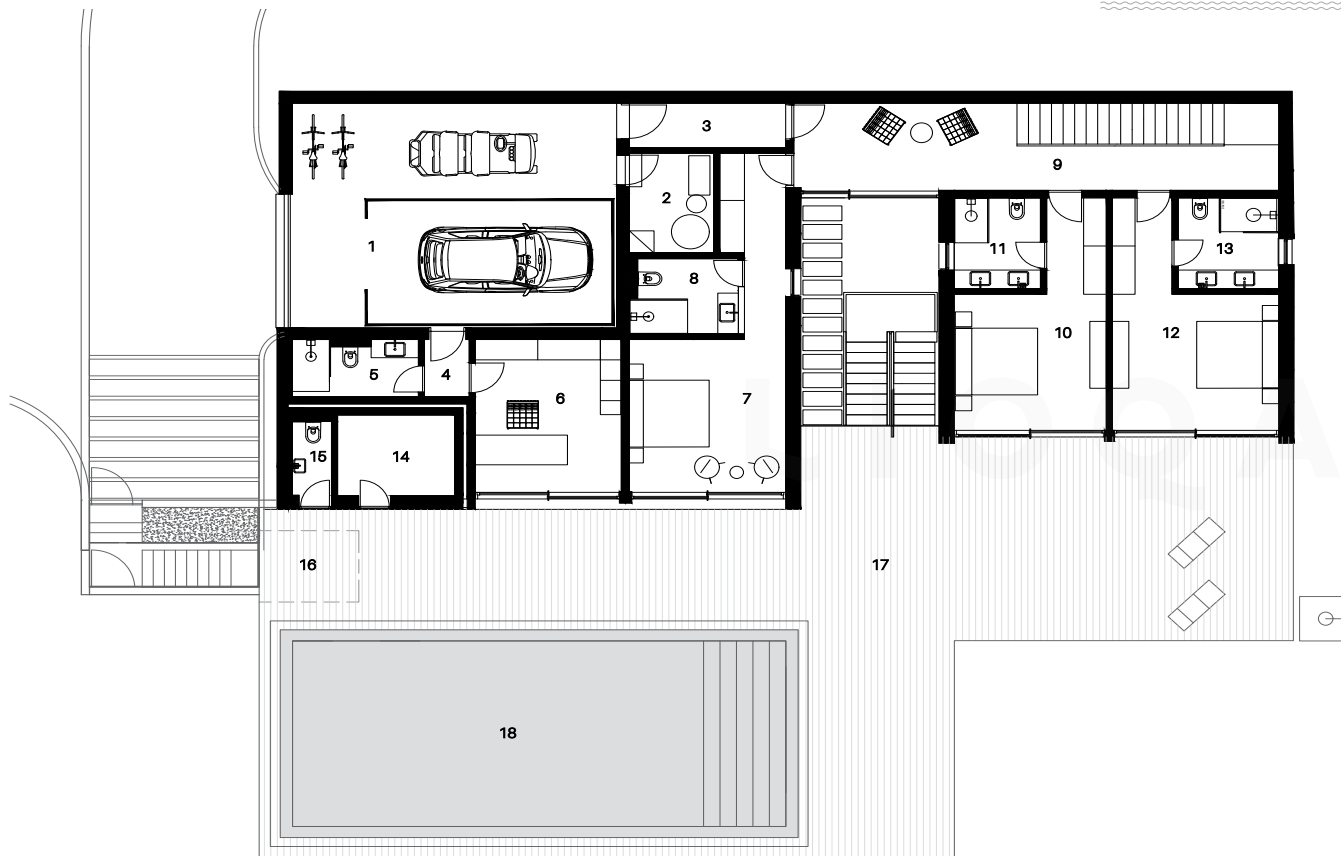
PLOT SIZE: 1140,0 m²





Villa D2

Underground floor

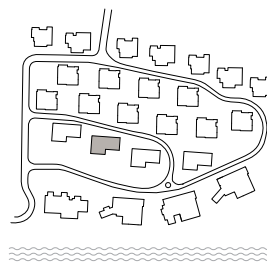


INDOOR AREA

1. Garage	47,8 m ²
2. Technical room	5,5 m ²
3. Hall	4,6 m ²
4. Anteroom	1,7 m ²
5. Bathroom 6	4,7 m ²
6. Bedroom 6	14,6 m ²
7. Bedroom 5	22,3 m ²
8. Bathroom 5	5,5 m ²
9. Corridor	22,1 m ²
10. Bedroom 4	17,4 m ²
11. Bathroom 4	5,1 m ²
12. Bedroom 3	14,9 m ²
13. Bathroom 3	6,0 m ²
14. Sauna	6,2 m ²
15. WC 2	1,9 m ²
16. Pool technical room	10,1 m ²
TOTAL INDOOR:	200,5 m²

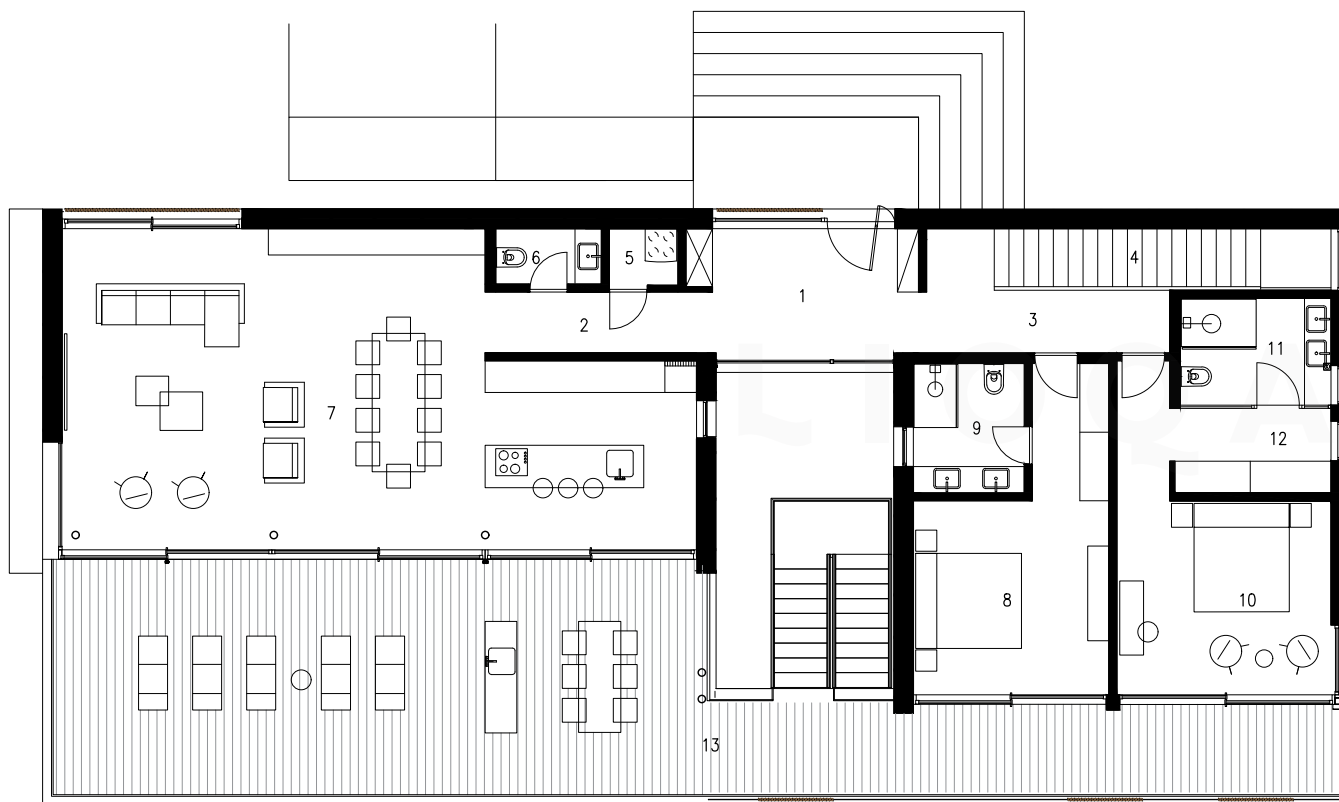
OUTDOOR AREA

17. Terrace	129 m ²
18. Pool	60 m ²
TOTAL OUTDOOR:	189,0 m²



Villa D2

Ground floor



INDOOR AREA

1. Entrance hall	10,7 m ²
2. Corridor	5,0 m ²
3. Corridor	6,8 m ²
4. Staircase	7,6 m ²
5. Storage	1,4 m ²
6. WC	2,1 m ²
7. Kitchen + living room	62,2 m ²
8. Bedroom 1	17,4 m ²
9. Bathroom 1	5,0 m ²
10. Bedroom 2	17,7 m ²
11. Bathroom 2	5,7 m ²
12. Garderoba	4,7 m ²

TOTAL INDOOR: 146,3 m²

OUTDOOR AREA

13. Terrace	79,7 m ²
-------------	---------------------

TOTAL OUTDOOR: 79,7 m²

